

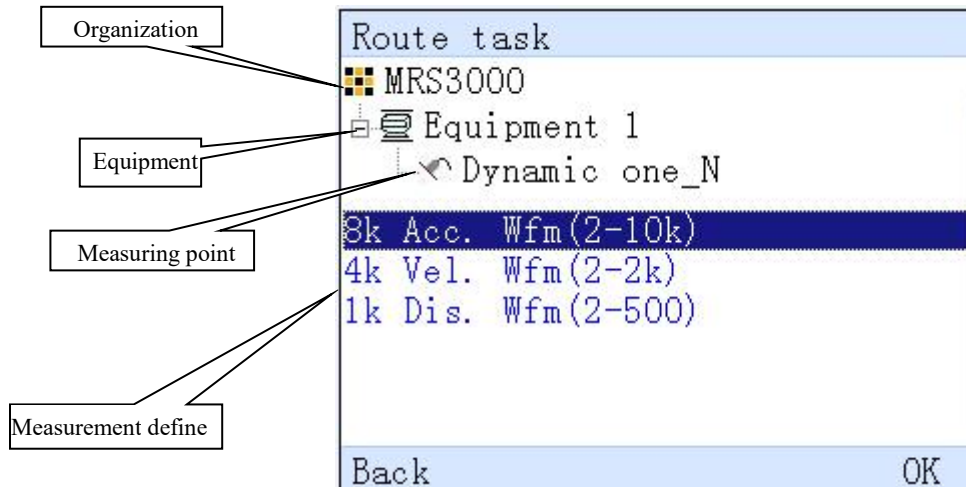
# RH711 Vibration Analyzer



## **Vibration analyzer with:**

- **Route measurements downloaded from PC software**
- **Real-time display of vibration waveform or spectrum**
- **Waveform/spectrum analysis**
- **Manual input function**
- **Integrated 30:1 infrared temperature measurement**
- **Balancing**
- **Electronic navigation**
- **Output to computer**
- **Set equipment status**
- **Explosion proof version is available and optional**
- **CE marking available**
- **RFID card compatible**
- **Multi-communication available: Wi-Fi or USB**

## ※ Route measurements downloaded from PC-programme



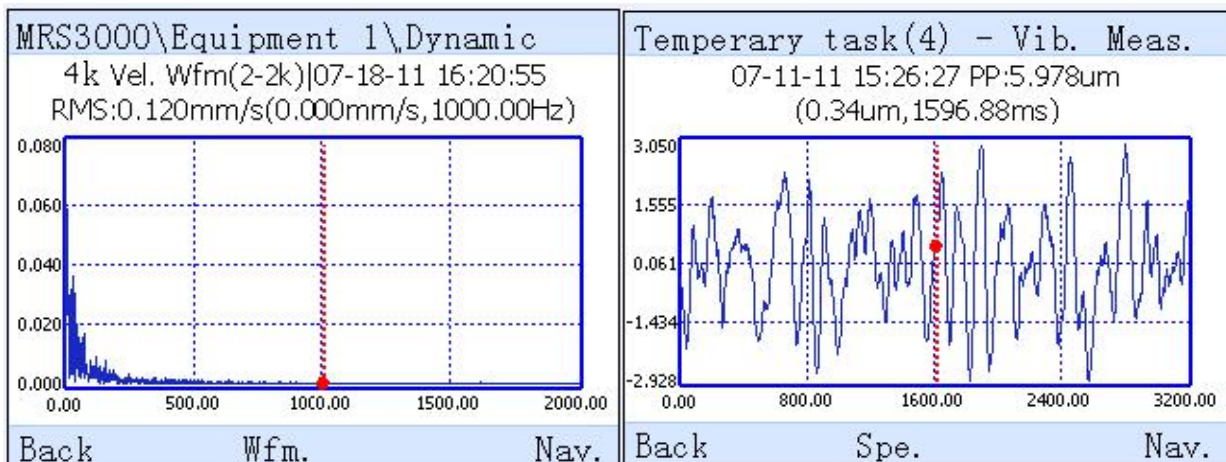
## ※ Real-time display of vibration waveform or spectrum

Display waveform or spectrum in the interface during measurement.

## ※ Waveform/spectrum analysis

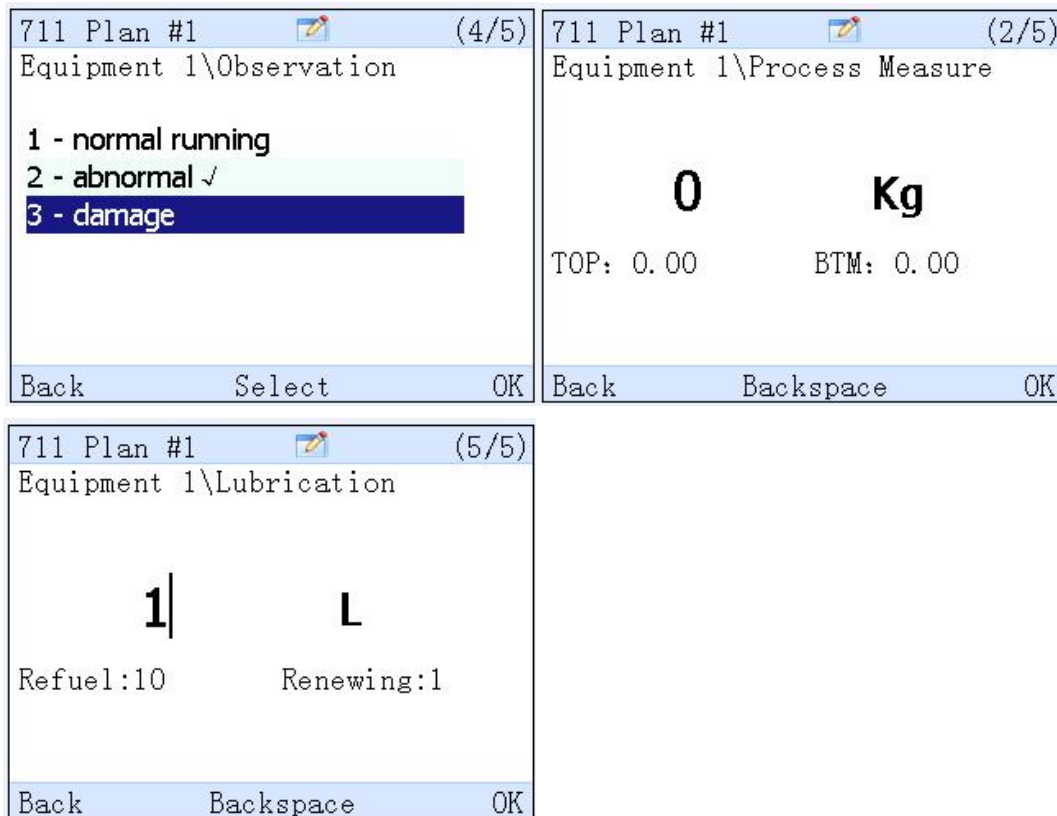
RH711 has analysis function of waveform or spectrum for measured data. The max. frequency of time domain waveform can reach 10KHz, and min. of 2Hz

The selectable lines during spectrum collection are 400, 800, 1600lines. The averaging type and window type are also selectable.

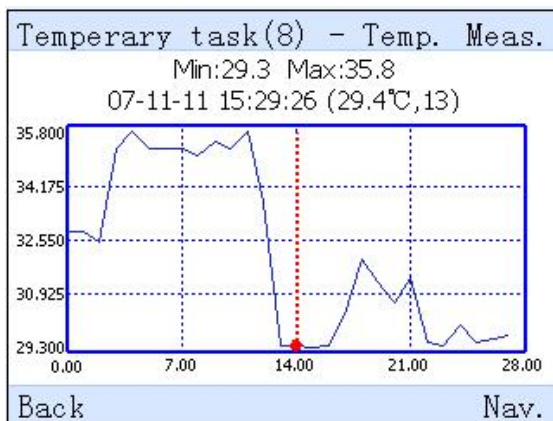


## ※ Manual input function

With the function of manual input, users can transmit observation, information process and lubrication value to the instrument and input corresponding value according to the actual demands.



### ※ Temperature measurement



The measured temperature value can be saved and viewed as waveform.

### ※ Balancing (Optional)

The balancing function provided a simple and direct method of single plane balancing for rotary machine, the RPM can be measured by laser techometer.

This funciton is used to judge the center of gravity, mass addition or renegade for the rotor, then make correction to balance the equipment through balancing operation.

Collection parameters setting	
Signal type:	◀ Velocity ▶
Trigger type:	EXT speed
Weight:	Remove
Averaging times:	4
Back	Record OK

Balance weight proposed	
Init. Vec.:	0.40 mm/s @ 300.5 °
W. Sugg.:	10.00 g @ 0.0 °
W. Vec. :	0.51 mm/s @ 313.6 °
1st WGT.:	8.88 g @ 155.3 °
Bal. Vec. :	0.02 mm/s @ 82.5 °
2nd WGT.:	13.62 g @ 285.4 °
Back	Save OK

### ※ Electronic navigation

Used to identify the equipment/ measuring point and work attendance automatically, with this function opened, users have to touch the i-button with electric tag, then system will navigate to corresponding route task automatically.

### ※ Output to computer

All route and off-route data can be output to computer for detailed analysis by software and create to Word file report.

### ※ Set equipment status

Users can choose the equipment status, such as: operating, reserve and maintenance. The default status is operating, when choose "Reserve" or "Maintenance", all measuring point tasks under this equipment will not be measured any more.

## Technical specification

Items	Description
Input	CH1: Vibration (ICP accelerometer) 、 voltage ( $\pm 5V AC$ )
Collection parameter	<p>Frequency span:2~10kHz, Precision:<math>\pm 2\%</math></p> <p>Sampling frequency:Maximal 25.6KHz</p> <p>Hardware Integral:integration, double integration</p> <p>A/D conversion:16 bit, Harmonic distortion:<math>&lt; -70dB</math></p> <p>Parameters:Sampling frequency, high pass filter, low pass filter, Sampling length</p> <p>Waveform length:1024、2048、4096、8192</p> <p>Lines: 400、800、1600、3200Lines, Averaging:linearity、peak hold</p> <p>Window function type: Rectangle, Hanning</p>
Internal infrared temperature detector	<p>Temperature range: 0~300 (<math>^{\circ}C</math>) , Precision: <math>\pm 2\%</math>, <math>\pm 2^{\circ}C</math> Maximal</p> <p>Emission rate: 0~1 adjustable, Distance coefficient: 30: 1</p>
Single-Plane Dynamic Balancing	<p>Balance method: method of influence coefficient</p> <p>Phase: use external techometer</p>
Dimension	<p>height<math>\times</math>width<math>\times</math>depth: 156<math>\times</math>80<math>\times</math>46 (mm)</p> <p>grip size (width<math>\times</math>depth) : 52<math>\times</math>28 (mm)</p>
LCD	2.8 inches, 320 $\times$ 240 pixels, 260K true color
Weight	275g
Key board	21 keys, 1 million times lifespan
RPM measurement range	60~10,000RPM
Working environment	<p>temperature: <math>-10\sim 50^{\circ}C</math>, humidity: <math>&lt; 95\%</math> (without condensate)</p> <p>protection grade IP54, dustproof, waterproof</p>
Charging time	About 4 hours
Working time	working Time (Continuous) $> 10$ Hours
Communication	USB2.0
Storage capacity	1 GB
iButton	iButton 1990A

Radio Identification	Frequency	RFID , Frequency13.56MHz , Detection distance: within 3cm ( not standard configuration, optional) .
Anti-explosion		ExibIIBT3

## A complete instrument set contains:

- |                                                     |                                             |
|-----------------------------------------------------|---------------------------------------------|
| 1 pc Instrument incl. Battery                       | 1 pc Accelerometer with magnet base         |
| 1 pc Laser techometer                               | 1 pc screw and verification card            |
| 1 pc Reflective tape                                | 1 pc user manual                            |
| 1 pc adapter                                        | 1 pc carry bag and neckstrap for instrument |
| 1 pc USB cable                                      | 1 pc carry case for the complete unit       |
| 1 pc cable adapter for balancing version instrument |                                             |
| 1 pc transfer cable for laser techometer            |                                             |
| 1 disk with software, user manual etc.              |                                             |

**ROZH reserves the right to make changes in this technical specification.**



Add: B1-8, Animation industry base, Wangjiang West Road 800,Hefei city,Anhui,China

Tel:86-551-65335195 EXT 8870

Fax:86-551-65335196

Cellphone:86-15375282923

E-mail:xiaoyu.diao@ronds.com.cn

Website:www.ronds.com.cn